

METAL



Each of our metal digits start by being milled out from a 1/4" aluminum sheet, 5052 grade. We then have our finish options which are a machined brushed aluminum, powder-coated matte black or powder-coated semi-gloss white. All options are weather resistant and will continue to look beautiful on your house for 25+ years. Mounting hardware and template included.

Mounting Instructions

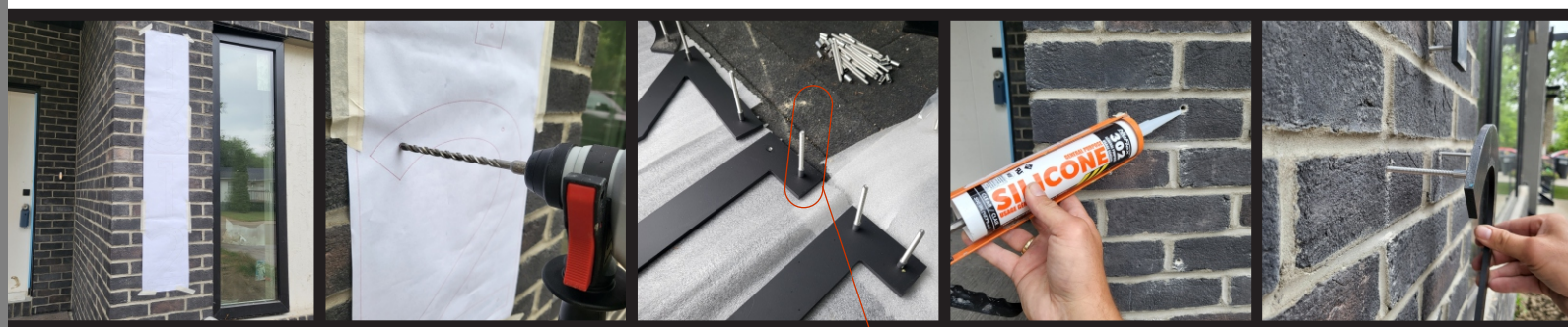
①

②

③

④

⑤



mounting hardware

⑥

⑦



- 1) Tape the mounting pattern to the location. Use the box drawn around the numbers as a level marking.
- 2) Drill out the hole locations with the proper 1/4" drilling bit for the surface you are drilling into.
- 3) Screw the mounting pins into the back of the digits. Optional floating effect spacers are shown in the photo.
- 4) Apply silicon or construction adhesive into each hole.
- 6) Push numbers into place. You can mount these numbers flush, or stand them off the wall as far as you desire. The pins are 3" long and allow for a lot of depth. Shown in the image are the optional spacers. These work great on flat surfaces to ensure an even spacing away from the wall. ***The mounting pins are a 3" long, 10-24 thread and will accept a 10-24 nut.**
- 7) You're all done! Here it is installed.